



ArcelorMittal



Shipbuilding material from stock

Energy Projects



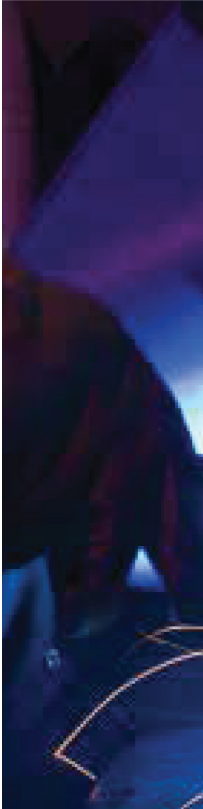
ArcelorMittal



SHIPBUILDING MATERIAL

We set our own course

- We focus on orders with non-standard specifications that also require fast delivery.
- Given our extensive stocks - in a huge variety of dimensions - that is absolutely no problem.
- Our covered warehouse close to Rotterdam has a permanent stock of 40,000 tonnes of steel for shipbuilding, ship conversion, renovation and repair, and offshore structures.



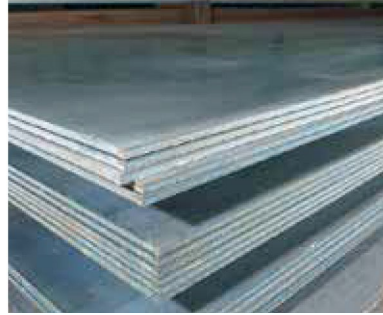
SHIPBUILDING MATERIAL

Large stocks, short delivery times

- 40,000 tonnes of steel always available from stock.
- Fast delivery, including SA-2.5 grade shot-blasting and painting.
- Modern certificate management system:
3.2 inspection certificates can be provided for delivery.
- Close contact with all IACS members: fast-track recertification leading to quick delivery.
- Support for additional testing and cutting.
- Short lines of communication.
- Favourable location and familiarity with all transport modalities for fast on-site deliveries worldwide.



Our Products



Shipbuilding plates

Grade A, DH36 and EH36 in accordance with EN 10025 with 3.2 inspection certificate

Thicknesses: Grade A 3–120 mm, DH36 4–60 mm, EH36 5–200 mm

Dimensions: 6/8/10/12000 x 1.5/2/2.5/3000 mm



Bulbflats

Grade A, DH36 and EH36 in accordance with EN 10025 with 3.2 inspection certificate

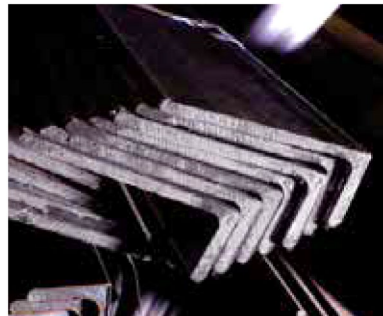
Length: 12000 mm

Dimensions: 60 x 4 to 430 x 17 mm

Offshore grades S355G11 in accordance with EN 10225 with 3.2 inspection certificate

Length: 12000 mm

Dimensions: 60 x 5 to 180 x 8 mm



Inverted angle bars

Grade A, DH36 and EH36 in accordance with EN 10025 with 3.2 inspection certificate

Length: 12000 mm

Dimensions: 200 x 90 x 9 x 12 mm, 400 x 120 x 11.5 x 23 mm



Our materials

Our stock program consists of the following materials:

	LRA / VLA	LR AH36 / VL D36	LR EH36 / VL E36	LR EH36 / VL E36 incl. Z35
Shipbuilding plates	From 4mm up to 100mm	From 4mm up to 80mm	From 5mm up to 200mm	From 15mm up to 150mm
Bulbflats	From 60x4 up to 430x17mm	From 60x4 up to 430x17mm	From 200x10 up to 430x17mm	
Inverted anglebar		Up to L450x125x11,5x18		
Halfroundbars	From 40x20mm up to 127x25mm			

Products in the spotlight

Looking at the products that give us both the best chances for further cooperation, we would like to outline the following :

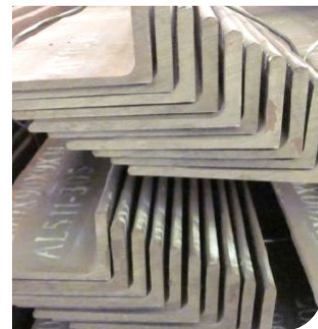
Besides these “focus” products we stock about 10,000 tons of plates in LR DH36 / VL D36 from **4mm** up to **80mm**



“Thick” plates in VL E36 / LR EH36 from 45mm up to **200mm**



Bulbflats in the larger dimensions from 300 x 12mm up to 430 x 17mm in VL D36 / LR DH36



Inverted anglebar in VL D36, from 200 x 90 x 9 x 13mm up to 450 x 125 x 11,5 x 18mm

Possible grades which can be available from stock in the near future

We are always looking for new niches and in that perspective are interested to hear if you would be interested in the following grades available from stock :

Plate material

In Grade LR FH36 / VL F36

In Grade LR EH46 / VL E46

In Grade LR FH46 / VL F46

Please let us know if you have ideas about these grades.



Stay in touch

Projects HQ
Mannesmannweg 5
4794 SL Heijningen
The Netherlands

 +31 88 0083 700

 www.arcelormittal.com/energyprojects

 [ArcelorMittal Energy Projects](#)
LinkedIn